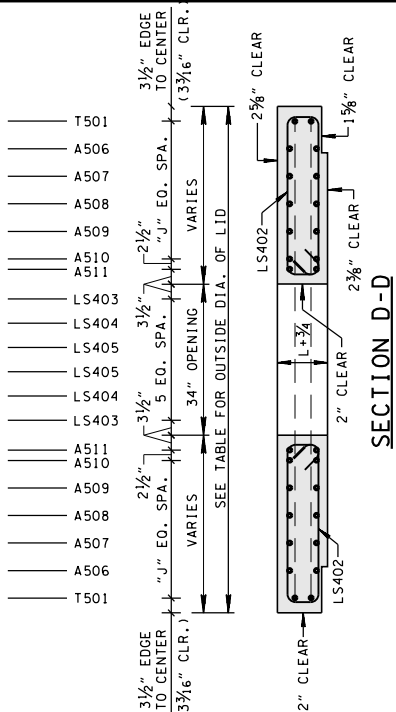


ADDITIONAL A-BARS ARE REQUIRED FOR THE LARGER
STRUCTURES AS INDICATED BY "NO. OF EQ.
SPACES 'J'"

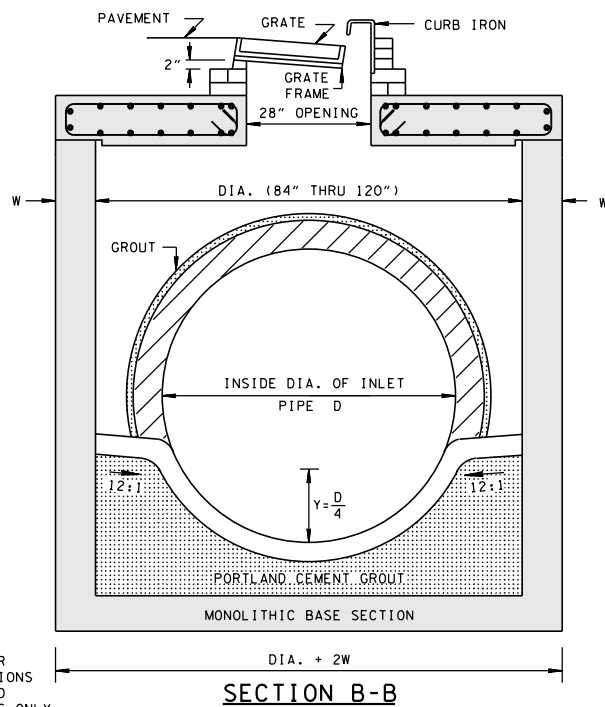
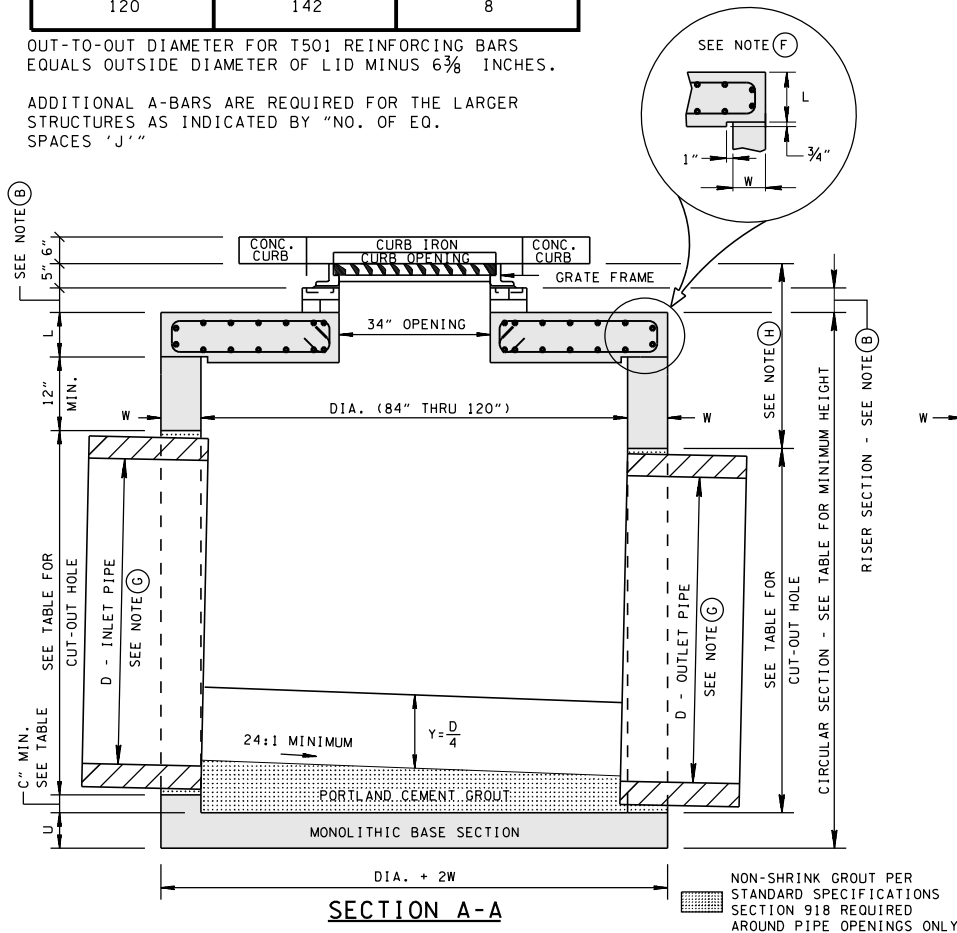
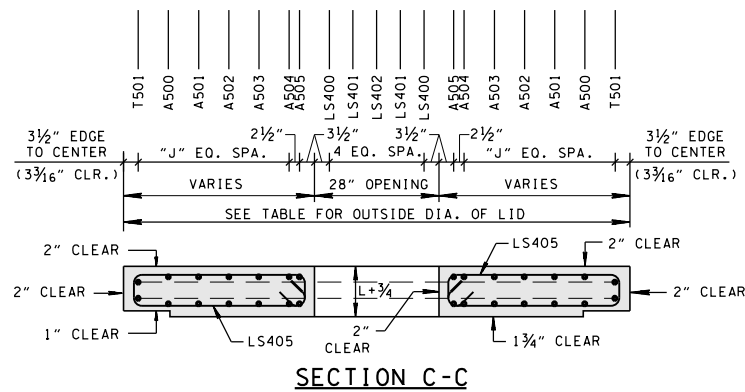


REV. 5-27-01: CHANGED PAY ITEMS IN
GENERAL NOTE (J) ADDED CATCH BASIN
MAXIMUM DEPTH NOTE.

REV. 8-01-12: REVISED CATCH BASIN
LID FOR COMPLIANCE WITH AASHTO LRFD
BRIDGE DESIGN SPECIFICATIONS, 4TH
EDITION WITH INTERIMS. REVISED
REINFORCING, GENERAL NOTES AND
ADDITIONAL MISC. DRAFTING EDITS.

CATCH BASIN DIMENSIONS							FOR DESIGN USE ONLY CATCH BASIN MINIMUM DESIGN DEPTH (FEET)			
INSIDE DIAMETER (D) OF PIPE (INCHES)	PIPE WALL THICKNESS (INCHES)	DIAMETER OF CUT-OUT HOLES (INCHES)	PRECAST SECTION MIN. HEIGHTS (INCHES)							
			84"	96"	108"	120"				
18	2½	25	57½	59	63½	64	4.25	4.38	4.42	4.46
24	3	32	64½	66	70½	71	4.79	4.92	4.96	5.00
30	3½	39	71½	73	77½	78	5.33	5.46	5.50	5.54
36	4	46	78½	80	84½	85	5.88	6.00	6.04	6.08
42	4½	53	85½	87	91½	92	6.42	6.54	6.58	6.63
48	5	60	92½	94	98½	99	6.96	7.08	7.13	7.17
54	5½	67	99½	101	105½	106	7.50	7.63	7.67	7.71
60	6	74	106½	108	112½	113	8.04	8.17	8.21	8.25
66	6½	81	113½	115	119½	120	8.58	8.71	8.75	8.79
72	7	88	120½	122	126½	127	9.13	9.25	9.29	9.33
78	7½	95	127½	129	133½	134	9.67	9.79	9.83	9.88

- ① CUT-OUT HOLES
BASED ON
REINFORCED
CONCRETE PIPE WITH
WALL TYPE "B".
- ② ALL FLEXIBLE PIPE
MATERIALS REQUIRE
GASKET. SEE
STANDARD DRAWING
D-PB-2.
- ③ CUT-OUT HOLES FOR
PRECAST STRUCTURES
TO BE FORMED IN
ORDER TO OBTAIN A
SMOOTH EDGED HOLE.
SCORED OR ETCHED
HOLES WITH
REINFORCING STEEL
LEFT UNCUT WILL
NOT BE PERMITTED.



- (A) ALL PRECAST ELEMENTS TO MEET ASTM C478 (CURRENT EDITION) AND AASHTO M199 (CURRENT EDITION) UNLESS SUPERSEDED BY THIS DRAWING.
- CONCRETE: $f'_c = 4,000$ POUNDS PER SQUARE INCH AT 28 DAYS
REINFORCING STEEL: ASTM A615, $F_y = 60,000$ POUNDS PER SQUARE INCH
ALL REINFORCING IS TO BE INSTALLED AS DETAILED ON THIS DRAWING.
- (B) THIS DIMENSION MAY VARY FROM A MINIMUM OF 0 INCHES TO A MAXIMUM OF 24 INCHES AS LONG AS 26 INCHES (FOR 84 INCH INSIDE DIAMETER CATCH BASIN) OR 27 INCHES (FOR 96 INCH, 108 INCH & 120 INCH INSIDE DIAMETER CATCH BASINS) IS SATISFIED. THE CONTRACTOR HAS THE OPTION OF USING BRICK OR STANDARD PRECAST CONCRETE RISER FRAMES. THE USE OF BRICK SHALL BE LIMITED TO 6 INCHES. IF THIS DIMENSION EXCEEDS 6 INCHES, PRECAST CONCRETE RISER FRAMES SHALL BE USED AS SHOWN ON STANDARD DRAWING D-RF-1.
- (C) PRECAST CATCH BASIN UNITS WHICH ARE DAMAGED DURING SHIPMENT OR INSTALLATION WILL BE REJECTED. IT SHALL BE THE RESPONSIBILITY OF THE CONTRACTOR TO REPLACE DAMAGED CATCH BASIN UNITS AT HIS OWN EXPENSE.
- (D) APPROPRIATE SIZING AND LOCATION OF LIFTING DEVICES SHALL BE THE RESPONSIBILITY OF THE FABRICATOR.
- (E) THE CONTRACTOR IS TO PATCH ALL LIFTING DEVICE HOLES WITH GROUT AND PLACE A MINIMUM OF ONE (1) INCH OF COVER OVER THE HARDWARE OF THESE DEVICES ON BOTH TOP AND BOTTOM SURFACES.
- (F) ALTERNATIVE JOINT DETAILS MAY BE ACCEPTABLE. SEE STANDARD DRAWING D-CB-99R FOR ADDITIONAL DETAILS.
- (G) SEE ROADWAY PLANS DRAINAGE TABULATION FOR PIPE INLET AND OUTLET ELEVATIONS. INVERT ELEVATIONS ARE TO BE ADJUSTED AS DIRECTED BY THE ENGINEER IN ORDER TO ACCOMMODATE INLET AND OUTLET PIPES.
- (H) FOR CASES WHERE THE OUTLET PIPE DIAMETER IS LARGER THAN THE INLET PIPE DIAMETER, A MINIMUM 26 INCH DEPTH (FOR 84 INCH INSIDE DIAMETER CATCH BASINS) OR A MINIMUM 27 INCH DEPTH (FOR 96 INCH, 108 INCH & 120 INCH INSIDE DIAMETER CATCH BASINS) SHALL BE MAINTAINED ABOVE THE OUTLET PIPE.
- (I) SEE STANDARD DRAWING D-CBB-13 FOR DETAILS REGARDING CAST IRON GRATES, FRAMES AND CURB INLETS.
- (J) SEE STANDARD DRAWING D-CB-13RA FOR DETAILS REGARDING 48" CIRCULAR NO. 13 CATCH BASIN (FOR USE WITH 6" NONMOUNTABLE CURB).
- (K) SEE STANDARD DRAWING D-CB-13RB FOR DETAILS REGARDING 60" AND 72" CIRCULAR NO. 13 CATCH BASIN (FOR USE WITH 6" NONMOUNTABLE CURB).
- (L) PAY DEPTH MEASUREMENT MADE FROM TOP OF GRATE TO OUTLET FLOW ELEVATION. PAYMENT FOR CATCH BASIN WILL BE MADE UNDER ITEM NUMBERS 611-13.02 CATCH BASINS, TYPE 13, > 4'-8' DEPTH THROUGH 611-13.07, CATCH BASINS, TYPE 13, > 24'-28' DEPTH PER EACH. PAYMENT FOR CATCH BASINS DEEPER THAN 28' WILL BE MADE UNDER ITEM NUMBER 611-13.08, CATCH BASINS, TYPE 13, ____'-____' DEPTH PER EACH. PAYMENT INCLUDES RISER SECTION AND GRATE.

CATCH BASIN DIMENSIONS							
INSIDE DIA. OF CATCH BASIN DIA. (INCHES)	WALL THICKNESS W (INCHES)	LID THICKNESS L (INCHES)	BASE THICKNESS U (INCHES)	OUTSIDE DIA. OF CATCH BASIN DIA. + 2W (INCHES)	MAX. INLET OR OUTLET CONC. PIPE SIZE - STR. (INCHES)	MAX. INLET OR OUTLET CONC. PIPE SIZE - 90° (INCHES)	DIMENSION
							C (INCHES)
84	8	9	8	100	60	36	3.5
96	9	10	8	114	66	42	4.0
108	10	10	12	128	72	48	4.5
120	11	10	12	142	78	54	5.0

☒ MINOR REVISION -- FHWA
APPROVAL NOT REQUIRED.

STATE OF TENNESSEE
DEPARTMENT OF TRANSPORTATION

STANDARD PRECAST
84" THRU 120"
CIRCULAR NO.13
CATCH BASIN
(FOR USE WITH 6"
NONMOUNTABLE CURB)

NOT TO SCALE	4-15-00	D-CB-13RC
--------------	---------	-----------